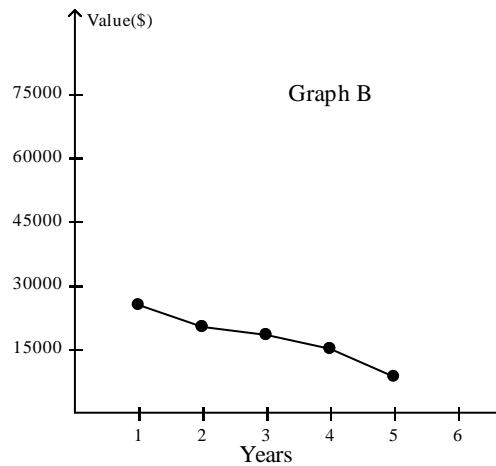
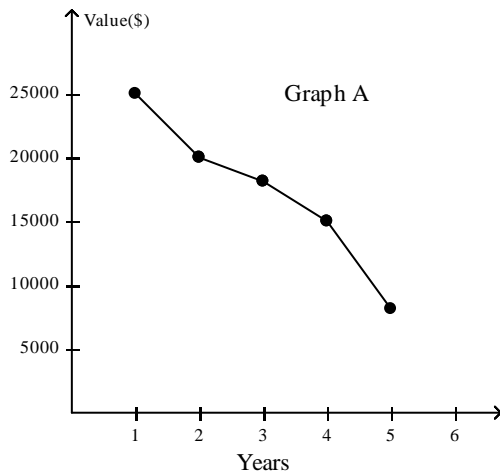


CA 6 Standard 6.SDAP.2.3

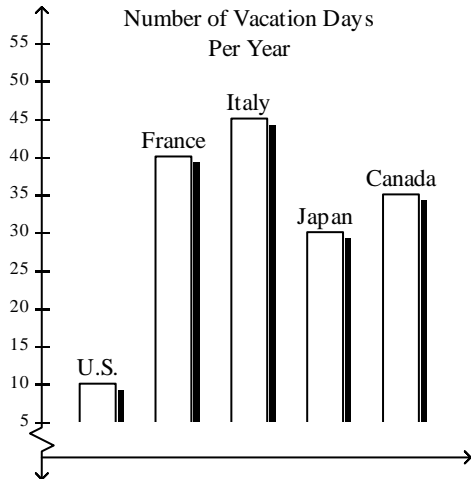
MULTIPLE CHOICE

1. Both graphs below show the depreciation of a new car. Which of the graphs is misleading and why?



- A. Graph B; the years are not in order.
- B. Graph B; it has a more spread out scale so the depreciation looks less steep.
- C. Graph A; the dollar amounts are not in order.
- D. Graph A; it is steeper.
2. Which of the following questions would *not* influence the data in a survey about vacationing?
- A. Do you prefer sunny California or Florida?
- B. Do you prefer gorgeous sandy beaches or the rocky beaches?
- C. Do you prefer walking on a path or hiking on a beautiful mountain trail?
- D. Do you prefer to stay at a hotel or bed and breakfast?
3. Which survey question is biased?
- A. What is your favorite type of music?
- B. Is country music your favorite type of music?
- C. What is your favorite song?
- D. Who is your favorite artist?

The bar chart below shows the average number of vacation days employees earn in five different countries.

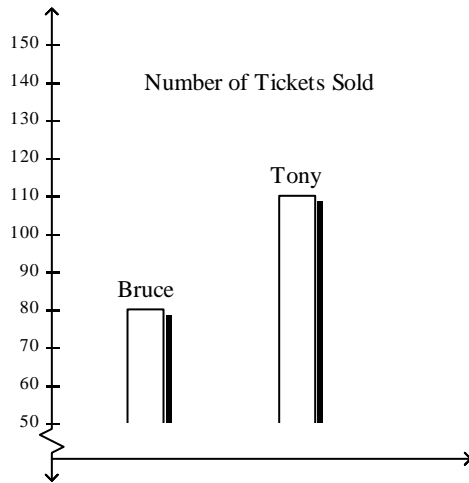


4. What conclusion does the person who made this graph want you to conclude in terms of the number of vacation days earned by U.S. and Japanese workers?
 - A. Workers in Japan earn fewer vacation days than workers in the U.S.
 - B. Workers in the U.S. earn less than one-fourth of the vacation days workers in Japan earn.
 - C. Workers in Japan earn just as many vacation days as workers in the U.S.
 - D. Japanese workers take more vacations than U.S. workers.

5. Why is the graph misleading?
 - A. The axis showing number of days is broken.
 - B. Some bars are taller than the other bars.
 - C. There are not enough countries to compare.
 - D. Italy has too many vacation days.

6. Which of the following survey questions is biased?
 - A. What is your favorite type of food?
 - B. What is your favorite type of sandwich?
 - C. What is your favorite type of meat?
 - D. Do you agree with the president of the meat association that chicken is the best type of meat?

The bar graph shown below shows the number of tickets sold by each student for the school play.



7. Which statement below appears to be true by looking at the graph (ignoring the scale)?

- A. Bruce sold twice as many tickets as Tony.
- B. Bruce sold half as many tickets as Tony.
- C. Bruce sold 10 more tickets than Tony.
- D. Bruce sold one-third as many tickets as Tony.

8. How many more tickets did Tony sell than Bruce?

- A. 10
- B. 30
- C. 55
- D. 80

9. Which of the following survey questions is *not* biased?

- A. What is your favorite type of movie?
- B. Is *Racing the Snail* your favorite movie?
- C. Do you agree with the critics that *Watching the Wind* is the best movie?
- D. Is *Traveling to Galaxies* your least favorite movie?

10. Which is *not* a reason that misleading graphs are used?

- A. to show data accurately
- B. to influence the conclusions drawn about the data
- C. to support a certain claim
- D. a generate a false impression of data